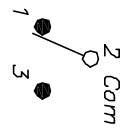
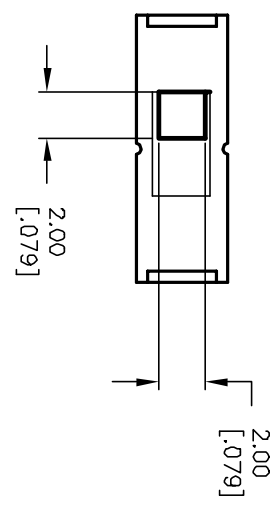
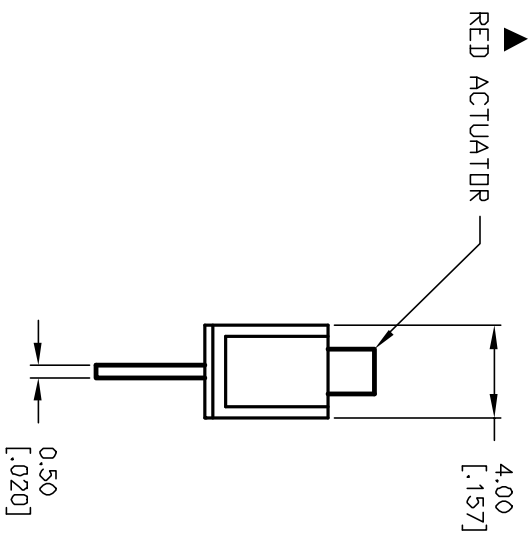
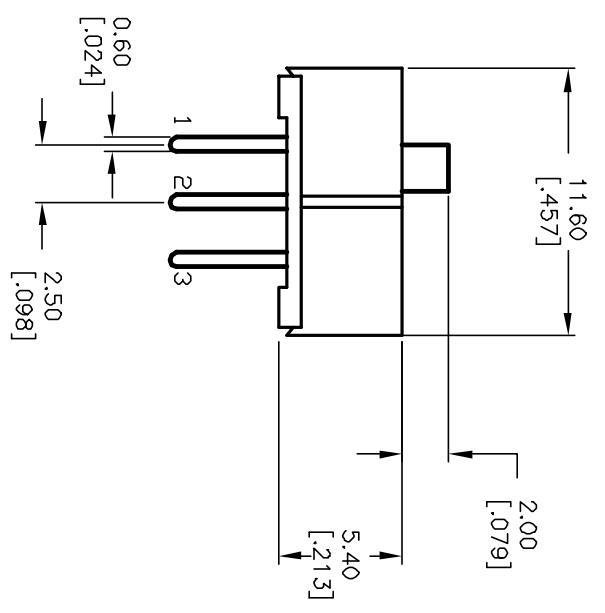


RECOMMENDED P.C.B. LAYOUT
NOT TO SCALE



CIRCUIT: SPDT
TIMING: NON SHORTING



- NOTES:
1. ALL DIMENSIONS IN MM [INCH]
 2. GENERAL TOLERANCE: X.X=±0.4
X.XX=±0.25
 3. TERM. NOS. FOR REFERENCE ONLY.
 4. ELECTRICAL RATING: 0.2A @30VDC
 5. CONTACT MATERIAL: Copper Alloy W/Silver Plating
 6. OPERATING FORCE: 250±100gf
 7. TRAVEL: 2.5mm
 8. CONTACT RESISTANCE: 50MILLI-OHMS Max.
 9. DIELECTRIC STRENGTH: 500V RMS@ SEA LEVEL.
 10. INSULATION RESISTANCE: 100Mega-OHMS Min.
 11. OPERATING TEMP.: -20°C to 70°C

REV.	ECN No.	DESCRIPTION	DATE	CHKD
A	11770	RELEASED FOR PRODUCTION	10/22/01	CJB

TITLE		SCALE	DATE	DR	DWG	REV
EG1218 (RED ACTUATOR)		3:1	10/22/01	CJB	P040038	A



THE INFORMATION CONTAINED IN THIS DOCUMENT IS PROPRIETARY TO E-SWITCH AND IS NOT TO BE COPIED OR TRANSFERRED